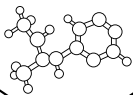


Kanlux

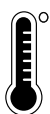
new
accessories
for spotlights



POLYAMIDE 6.6
reinforced
with fibreglass



-20°C
+120°C



working
temperature

spacer cover

1. It protects against the contact of cables of the installation with hot elements of the spotlight.
2. It is suitable for installation in 62-90 mm holes.

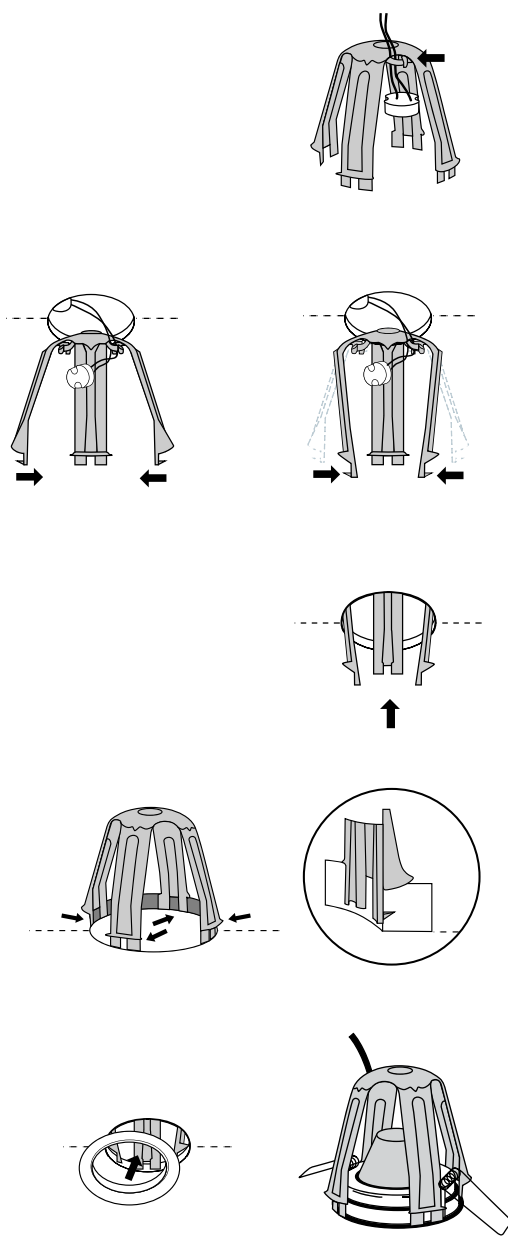
WWW.KANLUX.COM

Kanlux



cover spacer for spotlights

METHOD OF INSTALLATION:



1.

Lead power cables through terminal.

2.

Squeeze mounting brackets and adjust them to the size of the hole.

3.

Place the cover in the mounting hole.

4.

Press the gaskets at brackets' endings to the plasterboard.

5.

Install the spotlight in accordance with instructions.

guarantee of
SAFETY

UNIVERSAL
size

easy
INSTALLATION



25590

SC-1 COVER SPACER FOR SPOTLIGHTS

WWW.KANLUX.COM